



PROYECTO 51

Foodservice Solutions



DISPENSADORES VASOS

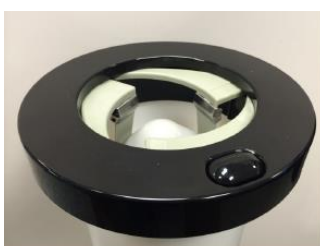
Mueble de acero inoxidable con capacidad para dispensar vasos, tapas y pajitas en un único modulo para facilitar el trabajo al operario y obtener la máxima rapidez en el servicio.

Es ideal para almacenar y dispensar cualquier vaso de plástico o papel de uno en uno, y se pueden ubicar de forma horizontal, vertical o boca arriba. No se rompen y se ajustan perfectamente al diámetro del vaso.

Los modelos DACS tienen espacios sólo para vasos. Los modelos LS tienen espacios para vasos, tapas y pajitas. Los modelos DAC-5 y DAC-10 son para montaje posterior, es decir, se incorporan en el interior del mueble.

CARACTERISTICAS:

- Nuevo diseño de ajuste.
- Adecuado para vasos de papel, espuma o plástico.
- Rango de tamaño del vaso: 23 cl a 189 cl tamaño estándar.
- Se puede montar vertical, horizontal o por encima de la cabeza.
- Disponible para uso en encimera.
- Construcción de acero inoxidable para una larga vida útil.
- Serie LS disponible con tapa y dispensador de pajitas.



ESPECIFICACIONES TECNICAS:

Model & Mfg. No.	Item Description	Width	Depth	Height	Collar Dia.	Tube Dia.	Tube Lg.	Cup Size Range	Shipping Weight
LS-20 9900328	Two DAC-10 components and three compartments (two lids, one straws)	15" (381 mm)	24" (610 mm)	21 1/2" (546 mm)	8 1/4" (209 mm)	5 7/8" (149 mm)	23" (584 mm)	8 oz. to 64 oz.	44 lbs. (20 kg)
LS-30 9900326	Three DAC-10 components and four compartments (three lids, one straws)	15" (381 mm)	24" (610 mm)	28" (711 mm)	8 1/4" (209 mm)	5 7/8" (149 mm)	23" (584 mm)	8 oz. to 64 oz.	44 lbs. (20 kg)
DACS-20 9900310	Two DAC-10 components	9 1/4" (235 mm)	24" (610 mm)	20 3/8" (518 mm)	8 1/4" (209 mm)	5 7/8" (149 mm)	23" (584 mm)	8 oz. to 64 oz.	26 lbs. (12 kg)
DACS-30 9900312	Three DAC-10 components	9 1/4" (235 mm)	24" (610 mm)	29 3/4" (759 mm)	8 1/4" (209 mm)	5 7/8" (149 mm)	23" (584 mm)	8 oz. to 64 oz.	70 lbs. (32 kg)
DACS-35 9900320	Three DAC-5 components	8" (203 mm)	25" (635 mm)	24" (610 mm)	7 1/4" (185 mm)	5 7/8" (149 mm)	23" (584 mm)	8 oz. to 32 oz.	70 lbs. (32 kg)
DACS-35 9900321	Two DAC-5 components and one DAC-10 component	8" (203 mm)	25" (635 mm)	24" (610 mm)	7 1/4" (185 mm)	5 7/8" (149 mm)	23" (584 mm)	8 oz. to 32 oz.	70 lbs. (32 kg)
DACS-40 9900324	Four DAC-10 components	9 1/4" (235 mm)	24" (610 mm)	38" (965 mm)	8 1/4" (209 mm)	5 7/8" (149 mm)	23" (584 mm)	8 oz. to 64 oz.	100 lbs. (45 kg)
DACS-50 9900314	Five DAC-10 components	15" (381 mm)	24" (610 mm)	30" (762 mm)	8 1/4" (209 mm)	5 7/8" (149 mm)	23" (584 mm)	8 oz. to 64 oz.	105 lbs. (48 kg)
DACS-60 9900330	Four DAC-5 components and two DAC-10 components	15" (381 mm)	24" (610 mm)	30" (762 mm)	8 1/4" (209 mm)	5 7/8" (149 mm)	23" (584 mm)	8 oz. to 64 oz.	95 lbs. (43 kg)

Model & Mfg. No.	Item Description	Collar Dia.	Tube Dia.	Tube Lg.	Cup Rim Diameter	Cup Size Range (oz.)	Shipping Weight
DAC-5 9900305	Individual DAC-5 component	7 1/4" (185 mm)	5 9/16" (140 mm)	22 3/4" (578 mm)	2 3/4" to 4 1/4" (70 mm to 108 mm)	8 oz. to 32 oz.	5 lbs. (3 kg)
DAC-5 9900319	Individual DAC-5 component for paper foam cups	7 1/4" (185 mm)	5 9/16" (140 mm)	22 3/4" (578 mm)	2 3/4" to 4 1/4" (70 mm to 108 mm)	8 oz. to 32 oz.	5 lbs. (3 kg)
SSDAC-5 9900332	Individual DAC-5 component with stainless look collar	7 1/4" (185 mm)	5 1/2" (140 mm)	23 3/4" (603 mm)	2 3/4" to 4 1/4" (70 mm to 108 mm)	8 oz. to 32 oz.	5 lbs. (3 kg)
DAC-10 9900301	Individual DAC-10 component	8 1/4" (210 mm)	5 9/16" (140 mm)	22 3/4" (578 mm)	2 1/2" to 4 1/2" (64 mm to 114 mm)	8 oz. to 64 oz.	5 lbs. (3 kg)
DAC-10 9900317	Individual DAC-10 component for paper foam cups	8 1/4" (210 mm)	5 9/16" (140 mm)	22 3/4" (578 mm)	2 1/2" to 4 1/2" (64 mm to 114 mm)	8 oz. to 64 oz.	5 lbs. (3 kg)
SSDAC-10 9900335	Individual DAC-10 component with stainless look collar	8 1/4" (210 mm)	5 9/16" (140 mm)	22 3/4" (578 mm)	2 1/2" to 4 1/2" (64 mm to 114 mm)	8 oz. to 64 oz.	5 lbs. (3 kg)